

Australian Landmarks



Sydney Harbour Bridge

Trace and Write – New South Wales

Sydney Harbour Bridge is a steel arch bridge that carries cars, trains, bikes and people across Sydney Harbour. It was constructed between 1923 and 1932 and cost \$6.25 million to build. Today, it is an important tourist attraction.

Tourists can climb the bridge to see the

Sydney Harbour Bridge

spectacular views across the harbour and the
New Year's Eve fireworks display on the bridge
is world famous.

S

t

S

l

b

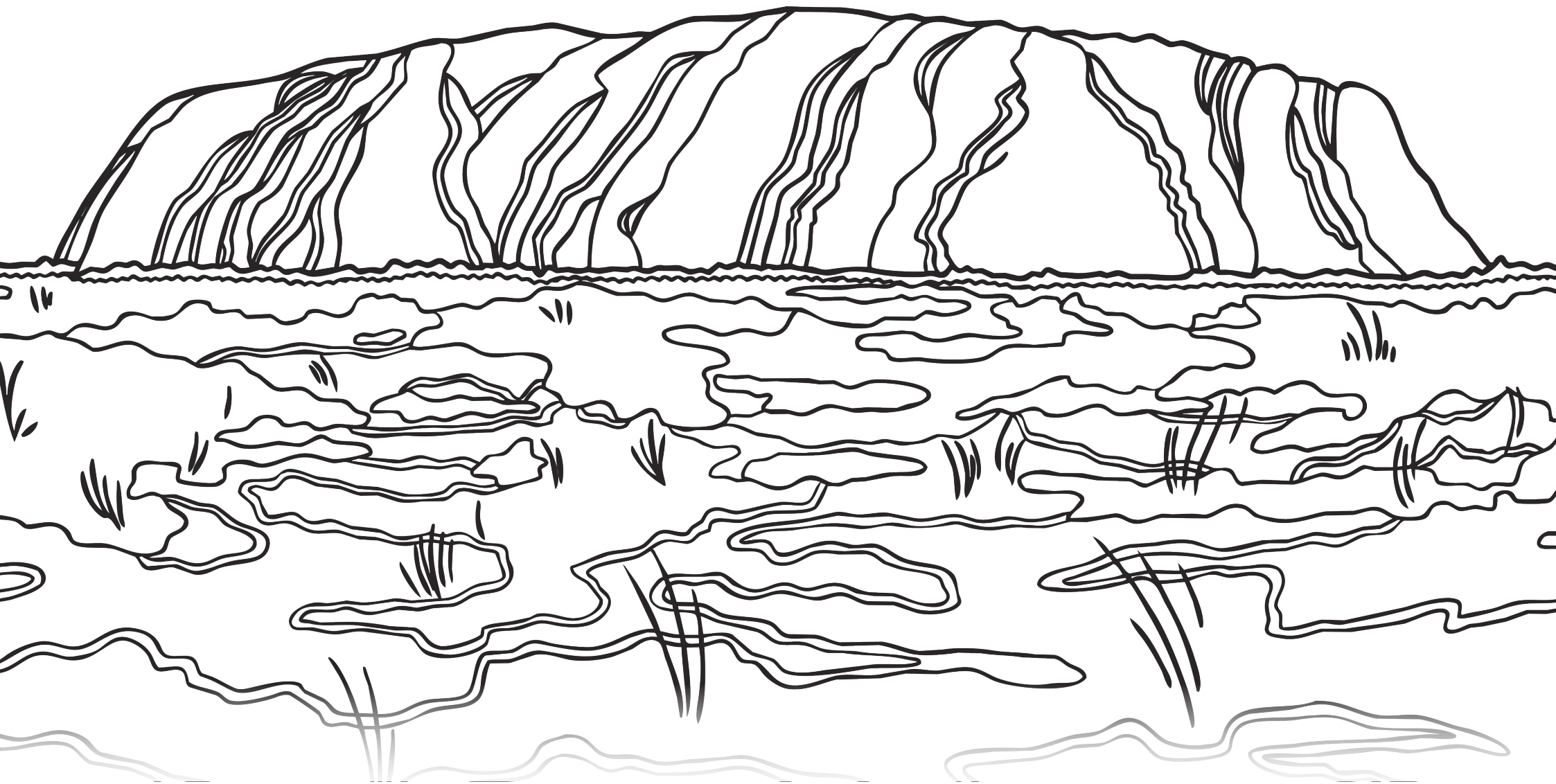
Sydney Harbour Bridge

T

S

N

i



Uluru

Trace and Write – New South Wales

Uluru is one of Australia's most iconic landmarks. It is located in the 'Red Centre' in the Northern Territory, Australia. Uluru is located in the Uluru-Kata Tjuta National Park, in the middle of a typical Australian landscape of red dirt, plants and animals.

U

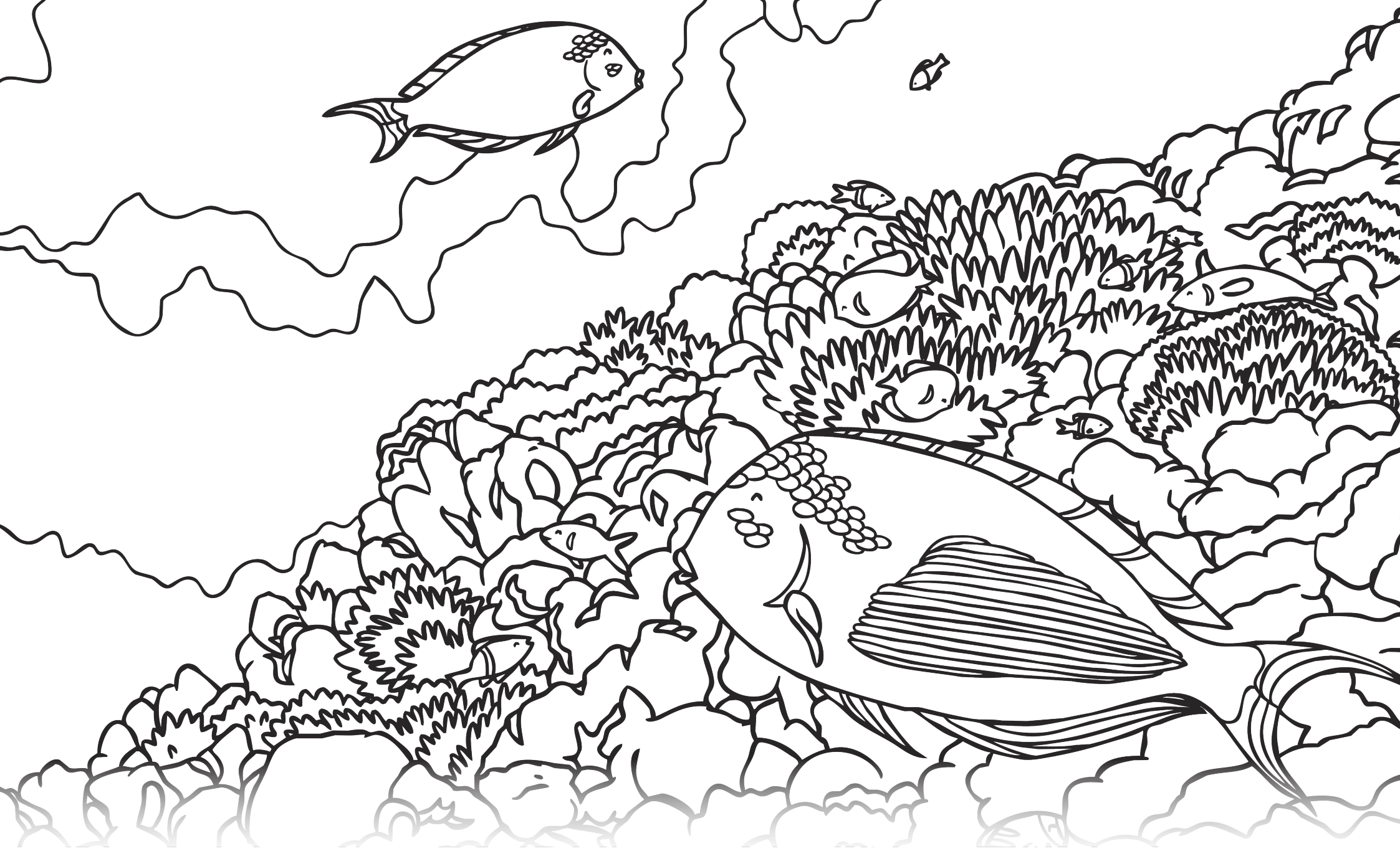
I

N

i

m

d



The Great Barrier Reef

Trace and Write – New South Wales

The Great Barrier Reef is the largest coral reef system in the world. It is in the Coral Sea, off the coast of Queensland, Australia. It is one of the most popular tourist destinations in Australia, with over two million visitors every year. There are over 1500 species of fish in the reef, ranging from the colourful orange and white

The Great Barrier Reef

clownfish to the largest fish in the world,
the whale shark.

T

S

f

f

w

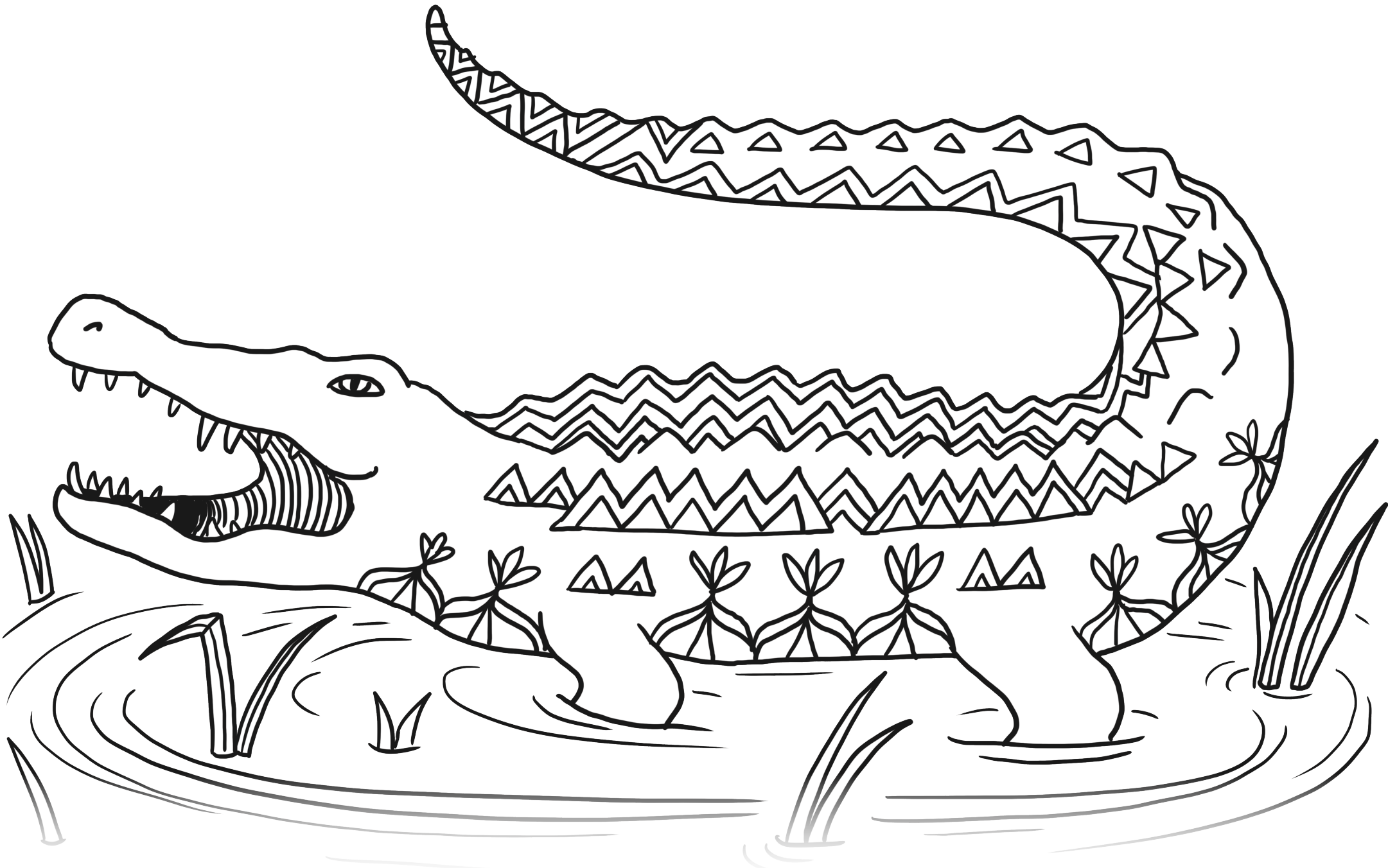
a

The Great Barrier Reef

r

c

t



Kakadu National Park

Trace and Write – New South Wales

Kakadu National Park is located in the Northern Territory, Australia. The diversity of the wildlife in the park is immense and it is a UNESCO world heritage site. Sugar gliders, flying foxes, saltwater crocodiles, bandicoots and dingoes are just some of the animals that can be found in Kakadu.

Kakadu National Park

The area is rich in Aboriginal culture and history, holding many important sites dating back over 60,000 years.

K

T

i

W

S

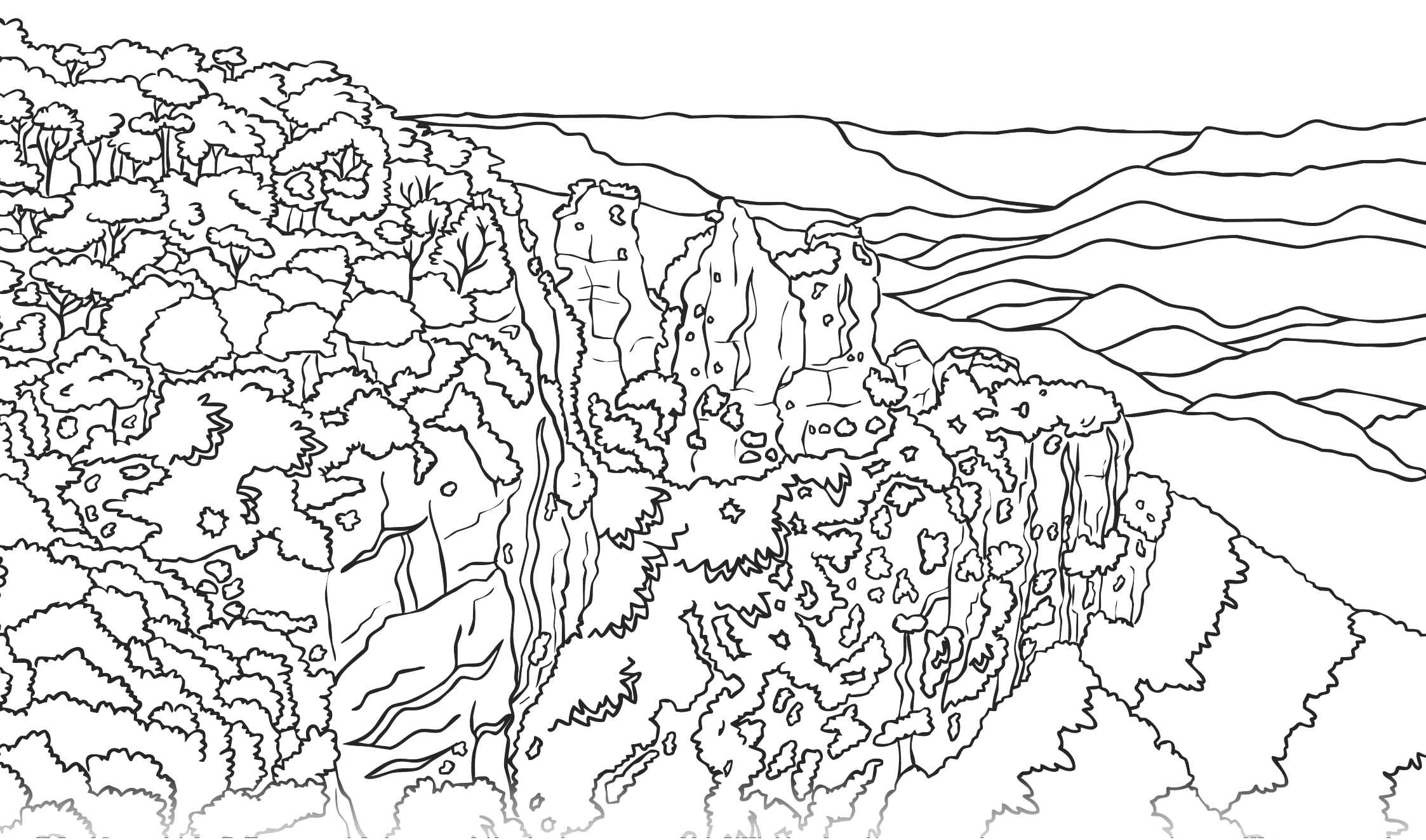
j

K

T

a

b



The Three Sisters

Trace and Write – New South Wales

The Three Sisters is the name given to an unusual rock formation in the Blue Mountains, New South Wales. They are named Meehni, Wimlah and Gunnedoo after three sisters of the Katoomba language group. According to Aboriginal Dreaming, the sisters were turned to stone by a witch doctor to protect them during a

The Three Sisters

battle with a neighbouring language group. Before
they were turned back, the witch doctor was
killed in battle.

T

U

N

W

K

The Three Sisters

A

S

b

t

k



The Sydney Opera House

Trace and Write – New South Wales

The Sydney Opera House is a world-famous building in Sydney, Australia. It was designed by Danish architect Jørn Utzon and is one of the most distinctive buildings of the 20th century.

Construction began in 1959 and was finally finished in 1973. Around eight million people

The Sydney Opera House

visit the opera house each year. In 1997, it became a UNESCO world heritage site.

T

b

D

m

C

The Sydney Opera House

f

v

b